

# Alpha Security Solutions for PWE-3 & PWE-6

Millions of Alpha Power Systems are deployed around the world and are vital to the integrity and reliability of the networks they serve. These power installations represent a significant capital investment by operators and should be protected accordingly. Alpha offers a full line of Power System Security Solutions to help secure and protect this critical hardware from theft, vandalism and other demanding environmental conditions.

## Internal Security

### Alpha Enclosure *Tamper Switch*.

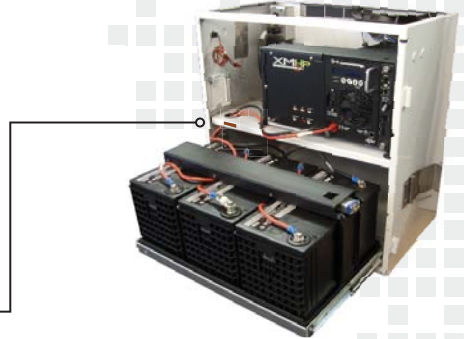
This magnetic door switch provides an intrusion alarm through remote status monitoring and may be ordered with normally-closed or normally-open contacts.

### Alpha Sure-Mount *Power Supply Hold-Down Bracket*.

This security device consists of a metal framework wrap that secures the power supply to the equipment shelf. Its fitted, wrap-around design locks the power supply in place, guarding against theft, vandalism and movement during natural disasters or other extreme conditions such as traffic accidents.

### Alpha Sure-Mount *Battery Security Device*.

This custom-fitted framework secures the batteries in the equipment enclosure. A hinged, double-wall reinforced cross beam with enclosed padlock housing locks the batteries in place, while still allowing access by service personnel for maintenance. Heavy-duty design and powder-coated steel construction provide the appropriate level of security to system batteries.



## External Security

### Alpha Safety-Lock Enclosure *Security Bar Kit*.

Alpha's Enclosure Security Bar prevents unauthorized access to pole-mount power system enclosures. It also helps secure enclosure contents during unforeseen emergency or natural disaster situations. Heavy-duty reinforced steel construction and swing-away hinged design strike the right balance between protection and serviceability. An enclosed padlock housing further protects the enclosure from unauthorized access.

### Alpha Hardened Steel *Safety Padlock*.

This hardened steel, corrosion-resistant, thin-profile padlock is a critical element in preventing unauthorized access while still allowing keyed entry to secured areas. Additionally, restricted keyways, customer-specific keycodes and exclusive key blanks allow operators to establish a comprehensive keying strategy. It is an excellent addition to other Alpha Security Accessories as its size and thin-profile design fit within the enclosed padlock housings.

