

## Installation Instructions Wall-Mount Rack (WMR) for XM2-300HP and Battery



### NOTE:

Install the system in a sheltered, weather-protected location inaccessible to the general public.



### CAUTION!

The populated rack weighs approximately 120 lbs (54.3kg). The installer must verify the wall is capable of supporting the loaded rack. Direct mounting to a wall stud and use of customer-supplied 3/4" plywood backing is required.

### Recommended Tools and Materials:

- Ratchet with 1/2" and 5/16" (or metric equivalent) sockets
- Level
- Two user-supplied 5/16" x 3" (or metric equivalent) lag bolts
- 1" Torque Wrench
- Stud finder (optional)
- Drill with 1/4" (or metric equivalent) drill bit
- Tape measure (optional)

### Installation Procedure:

1. The dimensions of the rack are 23.59" H x 15.15" W x 8.58" D (600.0mm x 385.0mm x 218.0mm). Select a location that allows sufficient clearance on the top, bottom and sides for cabling required for the installation.
2. For center mounting, locate one stud and drill pilot hole. Install first user-supplied 5/16" lag bolt and hang the shelf using keyslot. Mark and drill second hole and install second lag bolt. Secure both lag bolts once shelf is positioned.
3. For corner mounting inside of enclosures, use drawing to locate the four corner holes. Use four user-supplied 5/16" bolts to mount rack.
4. To install an SPI, use either of the two SPI mounting holes on the top of the rack. Place the SPI so that the seizure screw is facing up. Tighten the SPI to 130 in-lbs of torque.

### IMPORTANT:

For proper operation of the Power Supply and Communications Module, external grounding of the rack is required.

5. The rack is connected to ground via either of the #10-32 ground studs circled in Fig. 1. Follow the proper stack up as shown in Fig. 2 to attach the supplied lock washer, #10-32 nut and user-supplied ground wire. Refer to applicable codes to determine additional grounding requirements.

For Power Supply installation and connection, refer to the XM2-300HP Technical manual (p/n 017-877-B1) at [www.alpha.com](http://www.alpha.com)

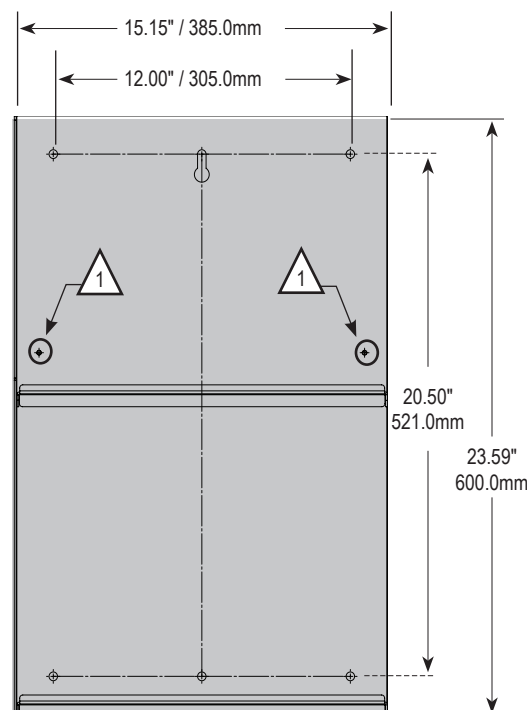


Fig. 1, Mounting hole layout

#10-32 ground studs

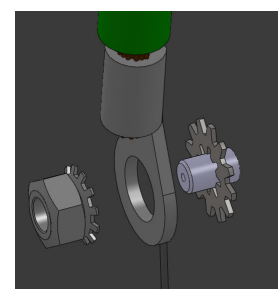


Fig. 2, Ground wire stack up

## Installation Instructions Wall-Mount Shelf (WMS) for XM2-300HP



### NOTE:

Install the system in a sheltered, weather-protected location inaccessible to the general public.



### CAUTION!

The populated shelf weighs approximately 40 lbs (18.14kg). The installer must verify the wall is capable of supporting the loaded shelf. Direct mounting to a wall stud and use of customer-supplied 3/4" plywood backing is required.

### Recommended Tools and Materials:

- Ratchet with 1/2" and 5/16" (or metric equivalent) sockets
- Level
- Two user-supplied 5/16" x 3" (or metric equivalent) lag bolts
- 1" Torque Wrench
- Stud finder (optional)
- Drill with 1/4" (or metric equivalent) drill bit
- Tape measure (optional)

### Installation Procedure:

1. The dimensions of the shelf are 6.94" (8.9" with XM2-300HP installed) H x 10.12" W x 8.58" D (176.3mm / 226.0mm x 257.0mm x 218.0mm). Select a location that allows sufficient clearance on the top, bottom and sides for cabling required for the installation.
2. For center mounting, locate one stud and drill pilot hole. Install first user-supplied 5/16" lag bolt and hang the shelf using keyslot. Mark and drill second hole and install second lag bolt. Secure both lag bolts once shelf is positioned.
3. For corner mounting inside of enclosures, use drawing to locate the four corner holes. Use four user-supplied 5/16" bolts to mount shelf.
4. Install the SPI to the SPI bracket and torque to 130 in-lbs. Follow the proper stack up as shown in Fig. 4 and mount the SPI bracket onto either #10-32 (item 2, Fig. 3) studs and tighten supplied #10-32 nut and lock washer.

### IMPORTANT:

For proper operation of the Power Supply and Communications Module, external grounding of the shelf is required.

5. The shelf is connected to ground via the #10-32 ground stud circled in Fig. 3. Follow the proper stack up as shown in Fig. 5 to attach the supplied lock washer, #10-32 nut and user-supplied ground wire. Refer to applicable codes to determine additional grounding requirements.

For Power Supply installation and connection, refer to the XM2-300HP Technical manual (p/n 017-877-B1) at [www.alpha.com](http://www.alpha.com)

For more information visit [www.alpha.com](http://www.alpha.com)

United States Bellingham, Washington Tel: 360 647 2360 Fax: 360 671 4936  
Canada Burnaby, British Columbia Tel: 604 436 5900 Fax: 604 436 1233

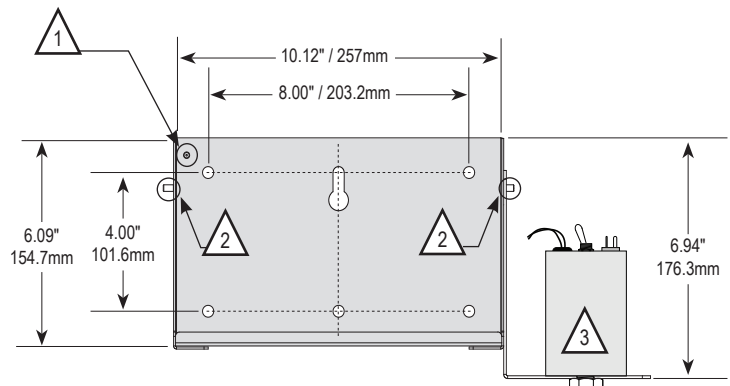


Fig. 3, Mounting hole layout and SPI bracket

- 1 #10-32 ground stud
- 2 #10-32 SPI mounting bracket stud (2 plcs.)
- 3 SPI

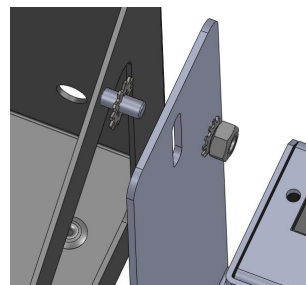


Fig. 4, SPI Hardware stack up

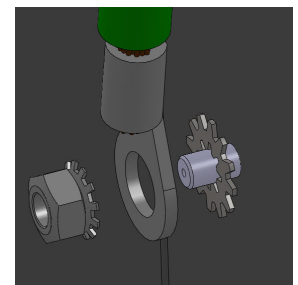


Fig. 5, Ground wire stack up