

DC Accessories

- Rackmount power sources including integrated distribution fuses save space and provide flexibility
- Distribution systems from 50A GMT fuse panels to 800A circuit breaker distribution centers
- 19"/23" universal rackmount



HDDC: High Density

GMT Fuse Panels

GMT 50 Series



19"/23" rackmount, 1RU high
 Flush mount and center positions
 Standard capacity: 50A per input
 Bright, color coded LED indicators for A/B input power status, A/B fuse failure alarms
 Form-C alarm contacts for A/B input power fail, A/B fuse fail (4 relays)
 Single input and dual input:

- 10 GMT output
- 10A/10B output
- 20 GMT output

GMT 100/High Capacity Series



19"/23" rackmount, 1RU high
 Flush mount and center positions
 Bright, color coded LED indicators for A/B input power status, A/B fuse failure alarms
 Single input, A/B isolated input and A/B/C redundant configuration available
 Included LED indicators, form-C alarm contacts

100 Series

High power density and ampacity:

- 100A per input: (single input, A/B input)
- 70A: (A/B/C- source)

Form-C alarm
 • 16 GMT outputs
 • 16A/16B GMT outputs
 C-output diode routed, 32 fused redundant outputs

High Capacity Series

24 GMT fuse sockets
 150A input bus rating
 Configurations include:

- Single input, 24 fuses
- A/B input, 12A/12B fuses, A/B/C version, 24 fuses

TPA Fuse Panel



1RU, 19"/23" rackmount
 Single input, A/B isolated input and A/B/C redundant configurations available
 12 TPA fuse sockets
 200A input bus rating
 Includes LED indicators, form-C alarm contacts

Circuit Breaker Panel

KTK Fuse Panel



19"/23" rackmount, 1RU high
 High power density
 High ampacity: 120A per A/B input
 Bright, color coded LED indicators for A/B input power status, A/B fuse failure alarms
 Form-C alarm contacts for A/B input power fail, A/B fuse fail (4 relays)
 Dual input: 4A/4B and KTK 30A fuse outputs

HDDC: High Density



19"/23" rackmount, 3RU high
 Single input
 A/B isolated input
 A/B input
 C-output redundant diode routed
 High breaker count to support VOD server redundant power supply circuit requirements and combined high current load
 High power density and ampacity:

- 200A per input: (single input, A/B input)
- 200A combined load: (A/B/C-source)

Accepts up to 22 plug-in bullet terminal circuit breakers
 Alphanumeric LCD display for voltage, load current per bus, breaker status
 Form-C alarm contacts for Major and Minor alarms

DC Accessories

- Compact, high power density DC distribution fuse panels and circuit breaker panels
- High current, high fuse/breaker count in a small RU footprint
- Battery disconnect for circuit breaker



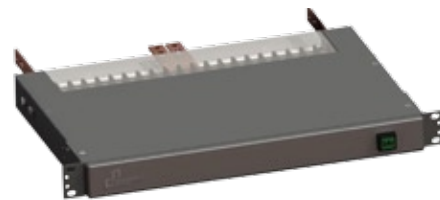
HDX Compact

DCX Series



400, 600, 800, 1000 and 1200A models
 Direct Battery Terminal mounting options for most battery configurations. Bus adapter and hardware kits provided for individual battery cell size configurations.
 LED indicators for On Line/Off Line status, EPO trip and general fault alarm status
 Form-C relay contact output for remote monitoring of status
 Integrated EPO function for remote trip

Matrix Breaker Panel



1RU, 19"/23" rackmount
 Single input, A/B insulated input and A/B/C redundant configurations available
 200A input bus rating
 Uses new "slimline" 1RU circuit breakers (Breaker choices available from 5A to 100A)
 Includes LED indicators, form-C alarm contacts
 Configurations include:

- Single input, 20 breakers
- A/B input, 10A/10B breakers, A/B/C version, 16 breakers

Super HDX



2RU, 19"/23" rackmount
 Single input, A/B insulated input configurations available
 300A input bus rating
 Uses AM series bullet terminal circuit breakers (Breaker choices available from 5A to 100A)
 16 circuit breaker position
 No GMT fuses (unlike standard HDX)
 Targeted at Cisco 7609 installations

HDX Compact



19"/23" rackmount, 2RU high
 Single input
 A/B insulated input
 High power density and ampacity:

- 300A per input: (single input, A/B input)
- 300A combined load: (A/B/C-source)
- Accepts up to 12 plug-in bullet terminal circuit breakers

 Standard unit includes front panel with A and B input LED indicators and breaker/fuse trip indicator LED
 Form-C alarm contacts for Major and Minor alarms