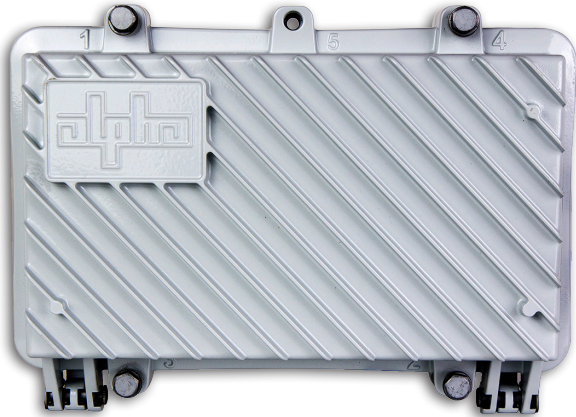


# AlphaGateway SMG

HFC-Enabled Power over Ethernet (PoE+) Gateway



- Create new MSO revenues by leveraging the HFC network
- High bandwidth PoE-powered delivery ideal for security cameras, Wi-Fi, traffic signals, sensors, etc.
- Connection through power passing taps allows mobility to strategically locate devices within proximity of hardline coax
- Dual-PoE ports provide cost-effective backhaul for multiple devices

## Deliver uninterrupted power and Gigabit Ethernet services to outdoor devices utilizing the high bandwidth networked power grid inherent to the existing HFC infrastructure.

The SMG family of outdoor HFC powered gateways extract power and RF from HFC hard coax and convert through a hardened DOCSIS modem to deliver power and Ethernet backhaul communication for external network devices via a standard IEEE 802.3 at Power over Ethernet (PoE) connections. Rugged outdoor hardiness and flexible mounting options allows power and backhaul to be delivered to virtually any location within the proximity to the HFC hard coax.

Adding powered network drops throughout the HFC network enables new revenue opportunities for deployable security surveillance, WiFi, traffic control, digital signage or any other appliance requiring reliable power and high bandwidth backhaul.

	SMG-01PE-21	SMG-01PE-24
<b>Cable Modem</b>		
<b>Compliance:</b>	DOCSIS 3.0	EuroDOCSIS 3.0
<b>Transmit Frequency Range:</b>	5 to 42MHz	5 to 65MHz
<b>Receive Frequency Range:</b>	88 to 1002MHz	108 ~ 1002MHz
<b>Channel Bandwidth:</b>	6MHz	8MHz
<b>Downstream Data Rate:</b>	Up to 300Mbps (8 Bonded Channels)	Up to 400Mbps (8 Bonded Channels)
<b>Maximum Operating Level (3 or 4 Channels):</b>	<b>TDMA</b> QPSK, QAM(8, 16, 32, 64) <b>S-CDMA</b> QPSK, QAM(8, 16, 32, 64, 128)	<b>TDMA</b> QPSK, QAM(8, 16, 32, 64) <b>S-CDMA</b> QPSK, QAM(8, 16, 32, 64, 128)
<b>Upstream Data Rate:</b>	Up to 100Mbps (4 Bonded Channels)	Up to 100Mbps (4 Bonded Channels)
<b>Outdoor Hardened:</b>	Yes	
<b>Network Management Protocols:</b>	SNMPv1, V2C, V3, TFTP	
<b>Input Connector:</b>	RF F-type female	
<b>Input Impedance:</b>	75 Ohm	
<b>Privacy:</b>	BPI+	
<b>Downstream Modulation:</b>	64 or 256 QAM	
<b>Ethernet</b>		
<b>Number of Powered Ethernet Ports:</b>	2	
<b>Connection:</b>	10/100/1000 BASE-T auto sensing/auto-MDIX (8P8C modular jack)	
<b>Distance:</b>	100M	
<b>Bulkhead Interface for Ethernet:</b>	Secure grommet (0.17 to 0.25in outer diameter cabling)	
<b>Power Over Ethernet:</b>	<b>Compliance:</b> IEEE 802.3at PoE <b>Max Power Out:</b> 34.2W per port <b>Max Power at PD (Powered Device):</b> 25W per port <b>Voltage Range Out of Base Unit:</b> 50-57V <b>Voltage Range at PD:</b> 42.5-57V <b>Max Current:</b> 600mA per port	
<b>Remote PoE Port Power Control:</b>	On, off, reset (per port)	
<b>Remote PoE Status:</b>	Link up/down, link speed, power up/down, PoE device class, PoE power consumption	
<b>Remote PoE Device Status:</b>	MAC address, IPv4/IPv6 address	
<b>Environment</b>		
<b>Input Voltage:</b>	42 to 90VAC, 50/60Hz (HFC plant powered)	
<b>Power Consumption:</b>	15W + PoE Loading	
<b>Operating Temperature:</b>	-40 to 60°C (-40 to 140°F)	
<b>Storage Temperature:</b>	-40 to 70°C / (-40 to 158°F)	
<b>Humidity:</b>	5 to 100%, non-condensing	
<b>Regulatory Compliance:</b>	<b>Certification Marks:</b> CSA c/us, CE <b>Environmental:</b> UL50E / NEMA 6; IEC 60529: IP67 <b>Safety:</b> UL/IEC/EN 60950-1: ED2 <b>Surge:</b> SCTE 81 <b>EMC:</b> FCC Class B (FCC CFR 47 Part 15 Class B), ICES-003 <b>RoHS:</b> Directive 2011/65/EU	
<b>Physical</b>		
<b>Mounting Options:</b>	Strand, pole, wall, vault	
<b>Dimensions H x W x L (in/mm):</b>	8.8 x 5.4 x 13.3 / 223 x 137 x 338	
<b>Weight (lb):</b>	11.2	



#### Worldwide Corporate Offices

**North America**  
Tel: +1 360.647.2360  
Fax: +1 360.671.4936

**Europe**  
Tel: +49 9122.79889.0  
Fax: +49 9122.79889.21

**Latin America**  
Tel: +561 792.9651  
Fax: +561 792.7157

**Asia Pacific**  
Tel: +852 2736.8663  
Fax: +852 2199.7988

