


# DC Accessories


- Rackmount power sources including integrated distribution fuses save space and provide flexibility
- Distribution systems from 50A GMT fuse panels to 800A circuit breaker distribution centers
- 19"/23" universal rackmount




HDDC: High Density


## GMT Fuse Panels

GMT 50 Series

19"/23" rackmount, 1RU high Flush mount and center positions Standard capacity: 50A per input Bright, color coded LED indicators for A/B input power status, A/B fuse failure alarms Form-C alarm contacts for A/B input power fail, A/B fuse fail (4 relays) Single input and dual input: <ul style="list-style-type: none"> <li>• 10 GMT output</li> <li>• 10A/10B output</li> <li>• 20 GMT output</li> </ul>

GMT 100/High Capacity Series		
		
19"/23" rackmount, 1RU high Flush mount and center positions Bright, color coded LED indicators for A/B input power status, A/B fuse failure alarms Single input, A/B isolated input and A/B/C redundant configuration available Included LED indicators, form-C alarm contacts		
<table border="0"> <tr> <td> <b>100 Series</b>                              High power density and ampacity:                             <ul style="list-style-type: none"> <li>• 100A per input: (single input, A/B input)</li> <li>• 70A: (A/B/C- source)</li> </ul>                             Form-C alarm                             <ul style="list-style-type: none"> <li>• 16 GMT outputs</li> <li>• 16A/16B GMT outputs</li> </ul>                             C-output diode routed, 32 fused redundant outputs                         </td> <td> <b>High Capacity Series</b>                              24 GMT fuse sockets                              150A input bus rating                              Configurations include:                             <ul style="list-style-type: none"> <li>• Single input, 24 fuses</li> <li>• A/B input, 12A/12B fuses, A/B/C version, 24 fuses</li> </ul> </td> </tr> </table>	<b>100 Series</b> High power density and ampacity: <ul style="list-style-type: none"> <li>• 100A per input: (single input, A/B input)</li> <li>• 70A: (A/B/C- source)</li> </ul> Form-C alarm <ul style="list-style-type: none"> <li>• 16 GMT outputs</li> <li>• 16A/16B GMT outputs</li> </ul> C-output diode routed, 32 fused redundant outputs	<b>High Capacity Series</b> 24 GMT fuse sockets 150A input bus rating Configurations include: <ul style="list-style-type: none"> <li>• Single input, 24 fuses</li> <li>• A/B input, 12A/12B fuses, A/B/C version, 24 fuses</li> </ul>
<b>100 Series</b> High power density and ampacity: <ul style="list-style-type: none"> <li>• 100A per input: (single input, A/B input)</li> <li>• 70A: (A/B/C- source)</li> </ul> Form-C alarm <ul style="list-style-type: none"> <li>• 16 GMT outputs</li> <li>• 16A/16B GMT outputs</li> </ul> C-output diode routed, 32 fused redundant outputs	<b>High Capacity Series</b> 24 GMT fuse sockets 150A input bus rating Configurations include: <ul style="list-style-type: none"> <li>• Single input, 24 fuses</li> <li>• A/B input, 12A/12B fuses, A/B/C version, 24 fuses</li> </ul>	

TPA Fuse Panel

1RU, 19"/23" rackmount Single input, A/B isolated input and A/B/C redundant configurations available 12 TPA fuse sockets 200A input bus rating Includes LED indicators, form-C alarm contacts

## Circuit Breaker Panel

KTK Fuse Panel

19"/23" rackmount, 1RU high High power density High ampacity: 120A per A/B input Bright, color coded LED indicators for A/B input power status, A/B fuse failure alarms Form-C alarm contacts for A/B input power fail, A/B fuse fail (4 relays) Dual input: 4A/4B and KTK 30A fuse outputs

HDDC: High Density

19"/23" rackmount, 3RU high Single input A/B isolated input A/B input C-output redundant diode routed High breaker count to support VOD server redundant power supply circuit requirements and combined high current load High power density and ampacity: <ul style="list-style-type: none"> <li>• 200A per input: (single input, A/B input)</li> <li>• 200A combined load: (A/B/C-source)</li> </ul> Accepts up to 22 plug-in bullet terminal circuit breakers Alphanumeric LCD display for voltage, load current per bus, breaker status Form-C alarm contacts for Major and Minor alarms

# DC Accessories

- Compact, high power density DC distribution fuse panels and circuit breaker panels
- High current, high fuse/breaker count in a small RU footprint
- Battery disconnect for circuit breaker



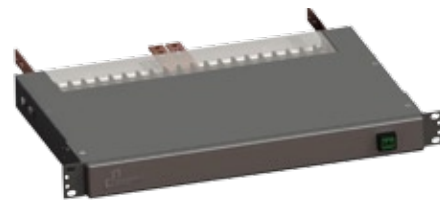
HDX Compact

## DCX Series



400, 600, 800, 1000 and 1200A models  
 Direct Battery Terminal mounting options for most battery configurations. Bus adapter and hardware kits provided for individual battery cell size configurations.  
 LED indicators for On Line/Off Line status, EPO trip and general fault alarm status  
 Form-C relay contact output for remote monitoring of status  
 Integrated EPO function for remote trip

## Matrix Breaker Panel



1RU, 19"/23" rackmount  
 Single input, A/B insulated input and A/B/C redundant configurations available  
 200A input bus rating  
 Uses new "slimline" 1RU circuit breakers (Breaker choices available from 5A to 100A)  
 Includes LED indicators, form-C alarm contacts  
 Configurations include:
 

- Single input, 20 breakers
- A/B input, 10A/10B breakers, A/B/C version, 16 breakers

## Super HDX



2RU, 19"/23" rackmount  
 Single input, A/B insulated input configurations available  
 300A input bus rating  
 Uses AM series bullet terminal circuit breakers (Breaker choices available from 5A to 100A)  
 16 circuit breaker position  
 No GMT fuses (unlike standard HDX)  
 Targeted at Cisco 7609 installations

## HDX Compact



19"/23" rackmount, 2RU high  
 Single input  
 A/B insulated input  
 High power density and ampacity:
 

- 300A per input: (single input, A/B input)
- 300A combined load: (A/B/C-source)
- Accepts up to 12 plug-in bullet terminal circuit breakers

 Standard unit includes front panel with A and B input LED indicators and breaker/fuse trip indicator LED  
 Form-C alarm contacts for Major and Minor alarms