

Power

Underground

Underground Battery Vaults



- Thermally stable underground environment helps promote maximum battery life and performance
- Reduces visual impact with below-grade battery installation
- Durable, maintenance-free, long-lasting, utility approved, non-combustible material
- Large battery capacity houses up to eight batteries for extended backup time
- Flexible enclosure options for both pole and ground-mount systems

Alpha's UBV Series Underground Battery Vaults and BVE enclosures were designed to meet municipal and state regulations involving line of sight restrictions. These utility approved vaults are manufactured from high density polyethylene (HDPE) and designed to house up to eight batteries. Several options are available including combinations with ground and pole mount power supply enclosures.

Underground Battery Vaults

UBV Underground Battery Vaults

Standard Features

HDPE Vault

(in): 43.5L x 31.75W x 18H
(mm): 105L x 806W x 457H

HDPE Lid

(in): 35.6L x 24.1W
(mm): 904L x 612W

Accommodates up to 8 batteries



Optional Features

- BCK-UBV3 Fused Battery Cable Kit - 3 batteries
- BCK-UBV4 Fused Battery Cable Kit - 4 batteries
- BCK-UBV6 Fused Battery Cable Kit - 6 batteries
- BCK-UBV8 Fused Battery Cable Kit - 8 batteries
- BCK-EXT 15 BCK extension - 5' for XM2 Series
- BCK-EXT 20 BCK extension - 20' for XM2 Series
- BCK-EXT 25 BCK extension - 25' for XM2 Series
- UBV-SH Tamper-proof Security Hardware
- UBV-ST Security Tool
- UBV-BT Battery Tray & Hardware (max. 6 AlphaCell™ batteries)
- UBV-BG Battery Grate for Vault
- UBV-BC Individual Battery Cover - Protects battery from water, dirt & corrosion
- RTS-4 Remote Temperature Sensor 4'
- RTS-25 Remote Temperature Sensor 25'

UBV-GM Vault with Ground Mount Enclosure

Standard Features

HDPE Vault

(in): 43.5L x 31.75W x 18H
(mm): 1105W x 806H x 457D

HDPE Lid

(in): 35.6L x 24.1W
(mm): 904L x 612W

BVE-GM Enclosure (vault mounted aluminum enclosure)

(in): 24W x 16D x 18H
(mm): 610W x 406D x 457H

- Includes Service Power Inserter
- Gem lock front door access

Accommodates up to 8 batteries

RTS-4 Remote Temperature Sensor 4'

Battery access without moving enclosure



Optional Features

- UBV-BT Battery Tray & Hardware (max. 6 AlphaCell batteries)
- UBV-SH Tamper-proof Security Hardware
- UBV-ST Security Tool
- UBV-BC Individual Battery Cover - Protects battery from water, dirt & corrosion
- UBV-BG Battery Grate for Vault
- BBX Service Disconnect Box (internal or external mount)
- BVE-MST Module slide tray

UBV-PM Vault with Pole Mount Enclosure

Standard Features

HDPE Vault

(in): 43.5L x 31.75W x 18H
(mm): 1105L x 806W x 457H

HDPE Lid

(in): 35.6L x 24.1W
(mm): 904L x 612W

BVE-PM Enclosure (pole mounted aluminum enclosure)

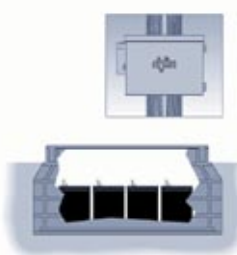
(in): 24W x 16D x 18H
(mm): 610W x 406D x 457H

Weight (lb/kg): 25/11.3

- Includes Service Power Inserter
- Gem lock front door access

Accommodates up to 8 batteries

RTS-25 Remote Temperature Sensor 25'



Optional Features

- UBV-BT Battery Tray & Hardware (max. 6 AlphaCell batteries)
- UBV-SH Tamper-proof Security Hardware
- UBV-ST Security Tool
- UBV-BC Individual Bell Jar Cover - Protects both 165 and 180 batteries from water, dirt & corrosion
- UBV-BG Battery Grate for Vault
- BBX Service Disconnect Box
- BVE-MST Module Slide Tray
- BVE-HDS Module Hold Down Strap
- BCK-EXT 15 BCK extension - 15'
- BCK-EXT 20 BCK extension - 20'
- BCK-EXT 25 BCK extension - 25'



UBV-GM



UBV-BC

For more information visit www.alpha.com

Alpha Technologies

United States
Canada

Bellingham, Washington Tel: 360 647 2360 Fax: 360 671 4936
Burnaby, British Columbia Tel: 604 430 1476 Fax: 604 430 8908

049-092-19-002 (1/06)

Alpha Technologies reserves the right to make changes to the products and information contained in this document without notice.

Copyright © 2006 Alpha Technologies. All Rights Reserved. Alpha® is a registered trademark of Alpha Technologies. The Alpha Group™ is a trademark of Alpha Technologies.